

SAFETY MUSTS: CHAINSAWS



GENERAL USE

■ **ALWAYS FOLLOW THE GUIDANCE IN THE INSTRUCTION MANUAL**

Read all safety warnings, instructions, illustrations and specifications for the specific model of the product you are using. Failure to follow the specific product's manual instructions may result in electric shock, fire and/or serious injury.



PPE & SAFE HANDLING

■ **ALWAYS USE SAFETY GLASSES.**

Everyday eyeglasses are NOT safety glasses. Also use face or dust mask if cutting operation is dusty.

■ **ALWAYS WEAR CERTIFIED SAFETY EQUIPMENT:**

- ANSI Z87.1 eye protection (CAN/CSA Z94.3),
- ANSI S12.6 (S3.19) hearing protection,
- NIOSH/OSHA/MSHA respiratory protection.

■ **FURTHER PROTECTIVE EQUIPMENT FOR HEAD, HANDS, LEGS AND FEET IS RECOMMENDED**

Adequate protective clothing will reduce personal injury by flying debris or accidental contact with the saw chain.

■ **KEEP ALL PARTS OF THE BODY AWAY FROM THE SAW CHAIN WHEN THE CHAINSAW IS OPERATING**

Before you start the chainsaw, make sure the saw chain is not contacting anything. A moment of inattention while operating chainsaws may cause entanglement of your clothing or body with the saw chain.

■ **ALWAYS HOLD THE CHAINSAW WITH YOUR RIGHT HAND ON THE REAR HANDLE AND YOUR LEFT HAND ON THE FRONT HANDLE**

Holding the chainsaw with a reversed hand configuration increases the risk of personal injury and should never be done.

■ **HOLD THE POWER TOOL BY INSULATED GRIPPING SURFACES ONLY BECAUSE THE SAW CHAIN MAY CONTACT HIDDEN WIRING**

Saw chains contacting a "live" wire may make exposed metal parts of the power tool "live" and could give the operator an electric shock.

■ **CARRY THE CHAINSAW BY THE FRONT HANDLE WITH THE CHAINSAW SWITCHED OFF AND AWAY FROM YOUR BODY**

When transporting or storing the chainsaw always fit the guide bar cover. Proper handling of the chainsaw will reduce the likelihood of accidental contact with the moving saw chain.

■ **FOLLOW INSTRUCTIONS FOR LUBRICATING, CHAIN TENSIONING AND CHANGING ACCESSORIES**

Improperly tensioned or lubricated chain may either break or increase the chance for kickback.

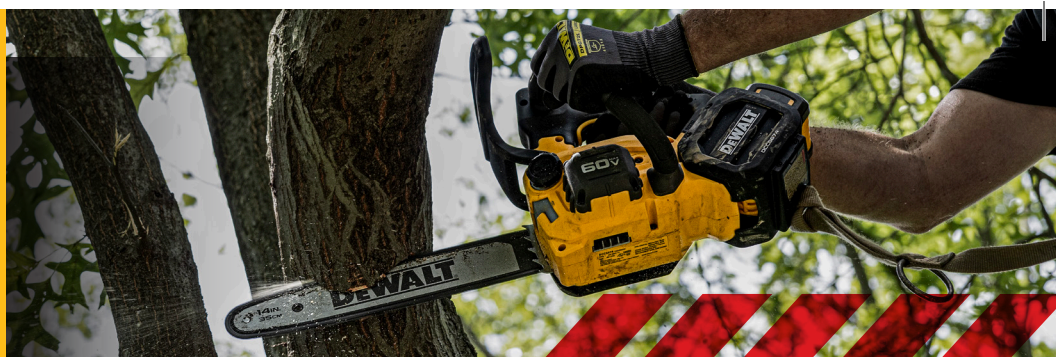
■ **KEEP HANDLES DRY, CLEAN, AND FREE FROM OIL AND GREASE**

Greasy, oily handles are slippery causing loss of control.

GUARANTEED TOUGH.®

SAFETY MUSTS: CHAINSAWS

Updated 04/2024 | For educational purposes only. Copyright ©2024 DEWALT. The yellow/black color scheme is a trademark for DEWALT power tools, accessories, anchors, and concrete adhesives. Always follow the guidance in the instruction manual.

The DEWALT logo is displayed in a bold, black, sans-serif font with a registered trademark symbol, set against a bright yellow background.

SAFETY MUSTS: CHAINSAWS



ENVIRONMENT & MATERIALS HANDLING

- **DO NOT OPERATE A CHAINSAW IN A TREE**
Operation of a chainsaw while up in a tree may result in personal injury.
- **ALWAYS KEEP PROPER FOOTING AND OPERATE THE CHAINSAW ONLY WHEN STANDING ON FIXED, SECURE AND LEVEL SURFACE**
Slippery or unstable surfaces such as ladders may cause a loss of balance or control of the chainsaw.
- **WHEN CUTTING A LIMB THAT IS UNDER TENSION BE ALERT FOR SPRING BACK**
When the tension in the wood fibers is released, the spring-loaded limb may strike the operator and/or throw the chainsaw out of control.
- **USE EXTREME CAUTION WHEN CUTTING BRUSH AND SAPLINGS**
The slender material may catch the saw chain and be whipped toward you or pull you off balance.
- **CUT WOOD ONLY**
Do not use chainsaw for purposes not intended. For example: do not use chainsaw for cutting plastic, masonry or non-wood building materials. Use of the chainsaw for operations different than intended could result in a hazardous situation.

GUARANTEED TOUGH.®

SAFETY MUSTS: CHAINSAWS

Updated 04/2024 | For educational purposes only. Copyright ©2024 DEWALT. The yellow/black color scheme is a trademark for DEWALT power tools, accessories, anchors, and concrete adhesives. Always follow the guidance in the instruction manual.